

**12th COUNCIL OF EUROPE MEETING  
OF THE WORKSHOPS FOR THE IMPLEMENTATION  
OF THE EUROPEAN LANDSCAPE CONVENTION**

***Vision for the future of Europe on territorial democracy:  
Landscape as a new strategy for spatial planning***

**Landscape dimension of the Special planning  
of Cultural Heritage Sites in Lithuania**

Thessalonica, Greece, 2-3 October 2012

**Ms Irma Grigaitienė**

**Protected Areas and Cultural Heritage Division, Ministry of Culture, Lithuania**

**Ms Giedrė Godienė**

**Protected Areas and Landscape Division, Ministry of Environment, Lithuania**

# Landscape planning system in Lithuania (1)

Implementing the European Landscape Convention in Lithuania the National Landscape Policy was approved by the Lithuanian Government in end of 2004.

**National Landscape Policy** provides objectives and general guidelines for the future actions. The most important of them are:

- **Safeguarding and balancing social, economic and ecologic functions of landscape**
- **Ensuring appropriate management, use, planning and sustainable development of landscape safeguarding the main features, attributions and identity of the country**
- **Maintaining and enhancing existing biological and landscape diversity, the spatial structure and the ecological potential of the landscape**
- **Optimizing the trends of the development of cultural landscape**
- **Harmonize of the architectural-spatial composition of the landscape**

## Landscape planning system in Lithuania (2)

Landscape management tasks became obligatory for all levels of general (master) plans, also, for the special plans of protected areas.

A useful experience of landscape management was obtained in the sphere of protected areas planning, especially National and Regional parks and UNESCO World Heritage Sites. The standard territorial regime system for different landscape management zones of protected areas was adopted by Lithuanian Government in 2004.

In 2005 the **Special Landscape planning regulations** have been adopted. All necessary procedures, needful landscape research results, as well as main directions for preparing of planning proposals are determinate in this document. This is a detailed legal basis for implementation of landscape planning idea for all physical (land use) planning levels in Lithuania

# Landscape planning system in Lithuania (3)

## Landscape:

### **Integral part of General (master) planning:**

- General plan of the territory of Lithuania (2002)
- general plans of the regions (2006-2011)
- general plans of the administrative districts (2008-2012)

### **Object of the Special planning:**

**Orientated to the protection and sustainable use of specially protected areas**

- for protected areas
- for cultural heritage sites
- for problem areas ( Special plan for Coastal strip (2012)

**Orientated to the protection and management of the landscape (territories) and setting landscape quality objective**

- special landscape plans

**Dimension of Special plans of cultural heritage sites, infrastructure , etc**

# Landscape planning system in Lithuania (4)

## **General (Master) plan of the territory of Lithuania (2002)**

The basis of this plan - updated analysis of landscape, its morphological identification and primary conservation evaluation.

### **The main solutions for the 2020 :**

- common territorial structures (including optimization of urban system and ensuring landscape protection by designation of Nature frame, protection of landscape and biological diversity and cultural heritage),
- specialized territorial structures (agricultural, forest, recreational, technical infrastructure, etc.),
- spatial integration of the development of the territory of state, reserving the territories for the common needs of state.

# Landscape planning system in Lithuania (5)

Optimizing the trends of the development of **cultural landscape**, among other actions, it is needed:

- to identify and evaluate the areas with specific features of historic development;
- to predict measures for the protection of historically developed structures of **cultural landscape**.

For the harmonization of the architectural-spatial composition of the **cultural landscape** it is needed:

- to sustain and enlarge the spatial expression of landscape;
- to sustain and regulate informative diversity of landscape;
- to create or enhance the individually of landscape structures;
- to seek for consistency between natural and artificial features.

# Special planning of World Heritage Sites in Lithuania (1)

The unique cultural landscapes are the basis of the outstanding universal value of UNESCO World Heritage Sites of Lithuania:

**Vilnius Historic Centre**

**Curonian Spit**

**Kernavė Archaeological Site (Cultural Reserve of Kernavė)**

The special planning documents – regulate plans were prepared for Kernavė Archaeological Site (2009) and Curonian Spit (2012).

Vilnius Historic Centre special cultural heritage site plan is being prepared.



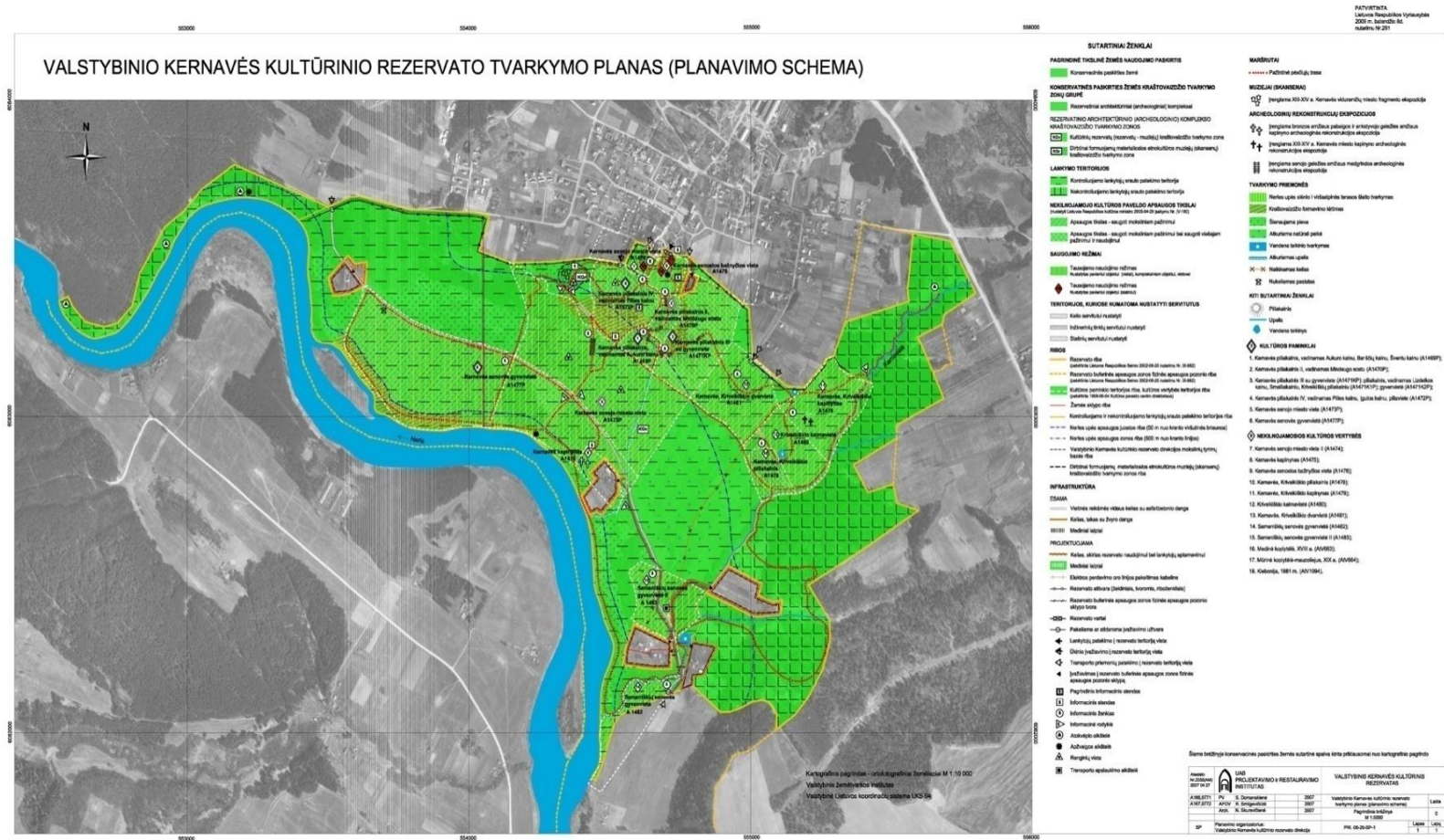
## Special planning of World Heritage Sites in Lithuania (2)



**Kernavė Archaeological Site (Cultural Reserve of Kernavė)**



## Special planning of World Heritage Sites in Lithuania (3)



## A part of the Special Plan of the Cultural Reserve of Kernavė

# Special planning of World Heritage Sites in Lithuania (4)



**The Curonian Spit is among 5 longest sandy spits in the world, the largest and most impressive spit in the Baltic region**



# Special planning of World Heritage Sites in Lithuania (5)



**The Curonian Spit landscape**

# Special planning of World Heritage Sites in Lithuania (6)



A part of the Special Plan of the Curonian Spit



# Special planning of World Heritage Sites in Lithuania (7)



**Vilnius Historic Centre, the largest Old Town in Eastern Europe**



# Special planning of World Heritage Sites in Lithuania (8)



**Vilnius Historic Centre, the largest Old Town in Eastern Europe**



# Special planning of World Heritage Site- Vilnius Historic Centre (1)

## Urban structure model

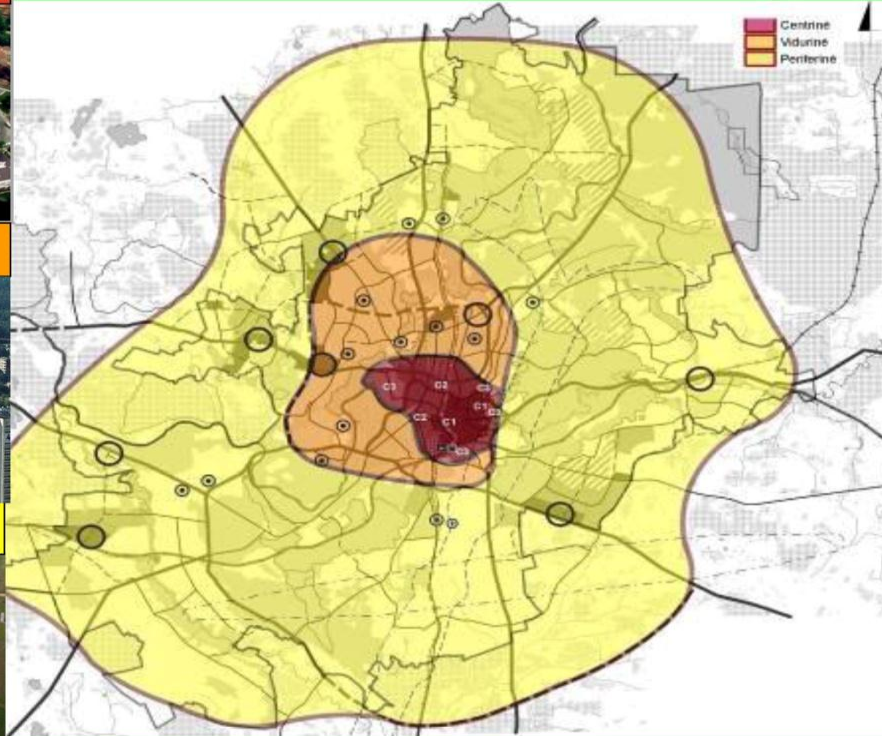
**Central zone XII-XIX c.**



**Middle zone XX c.**



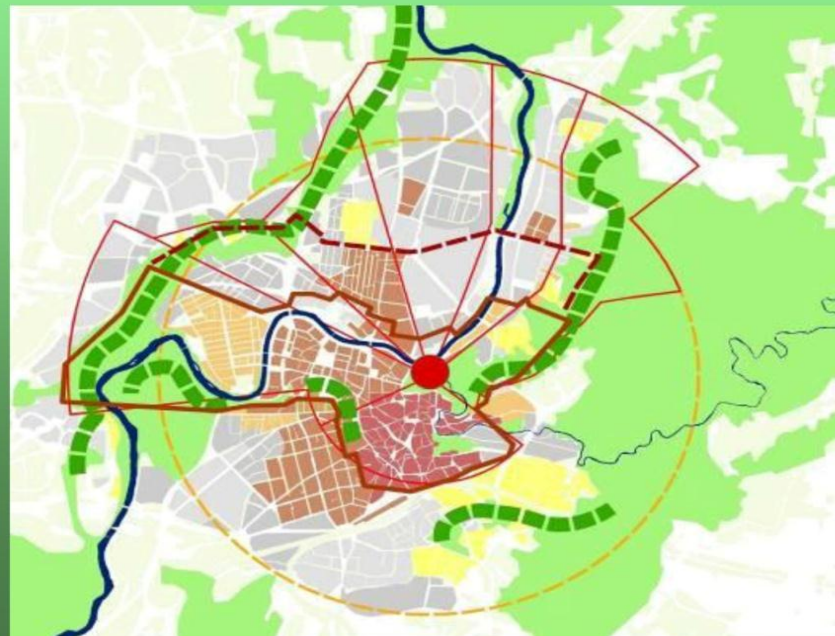
**Periphery zone XX-XXI c.**





# Special planning of World Heritage Site - Vilnius Historic Centre (2)

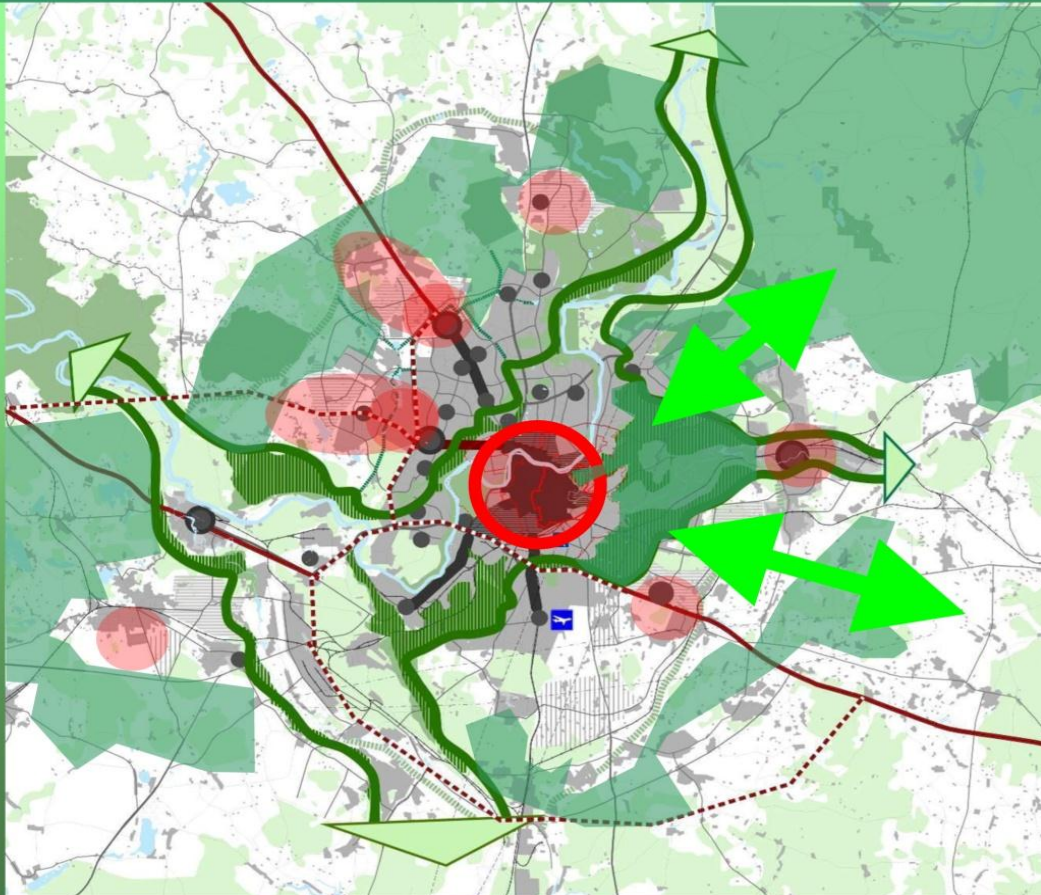
## IDENTITY OF THE CITY



1. Natural structure
2. Urban structure – different parts of the town with there specific principles of urban structure (Old town, New town, Žvėrynas, old suburbs)
3. Architecture of XX century in historic surrounding and neighbor territories.

# Special planning of World Heritage Site – Vilnius Historic Centre (3)

## Preserving of existing values



Hilly landscape.

Fantastic views.

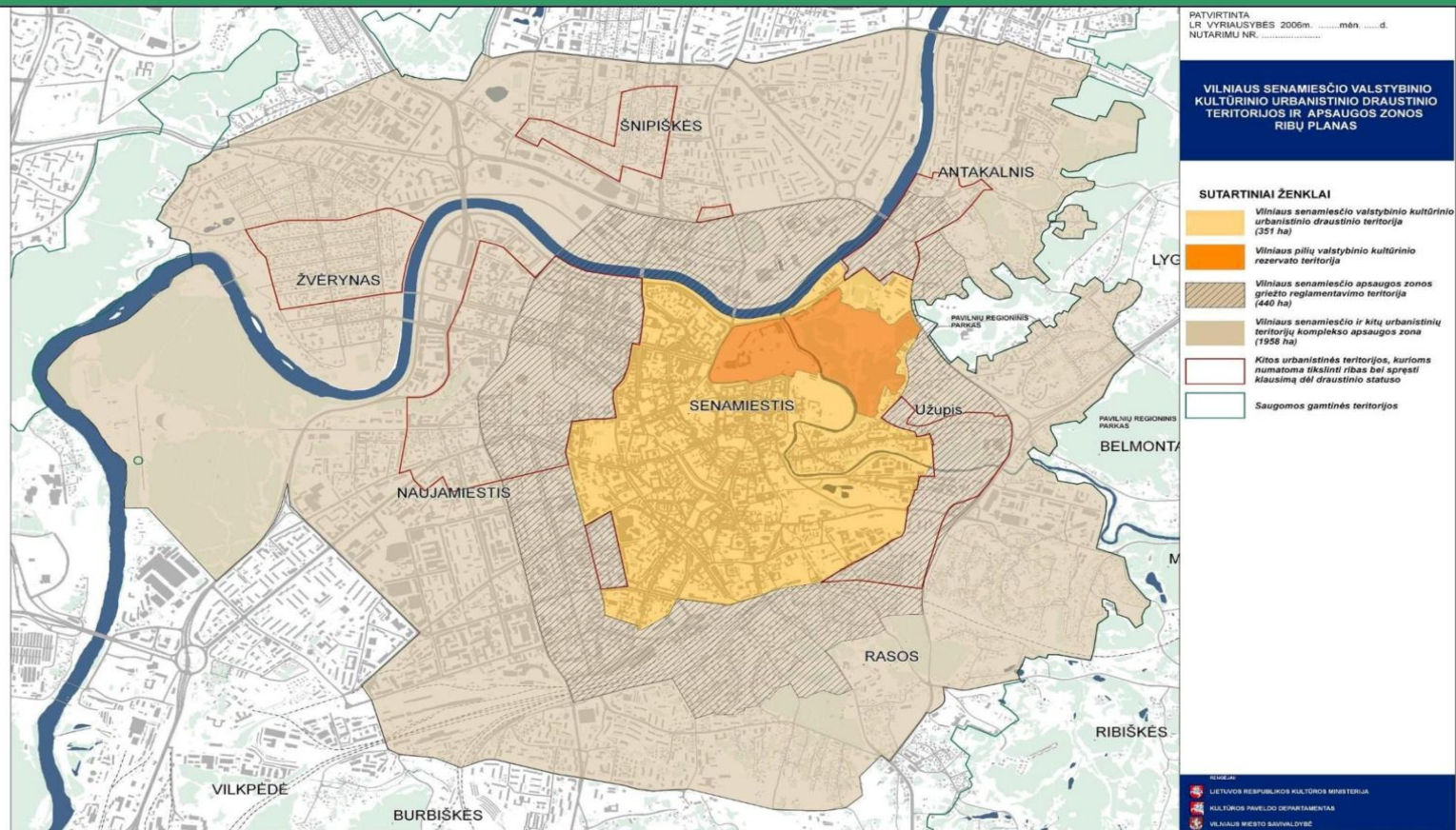
Preserved greenery  
in the city centre.

Still existing contact  
of old town and  
suburban area.



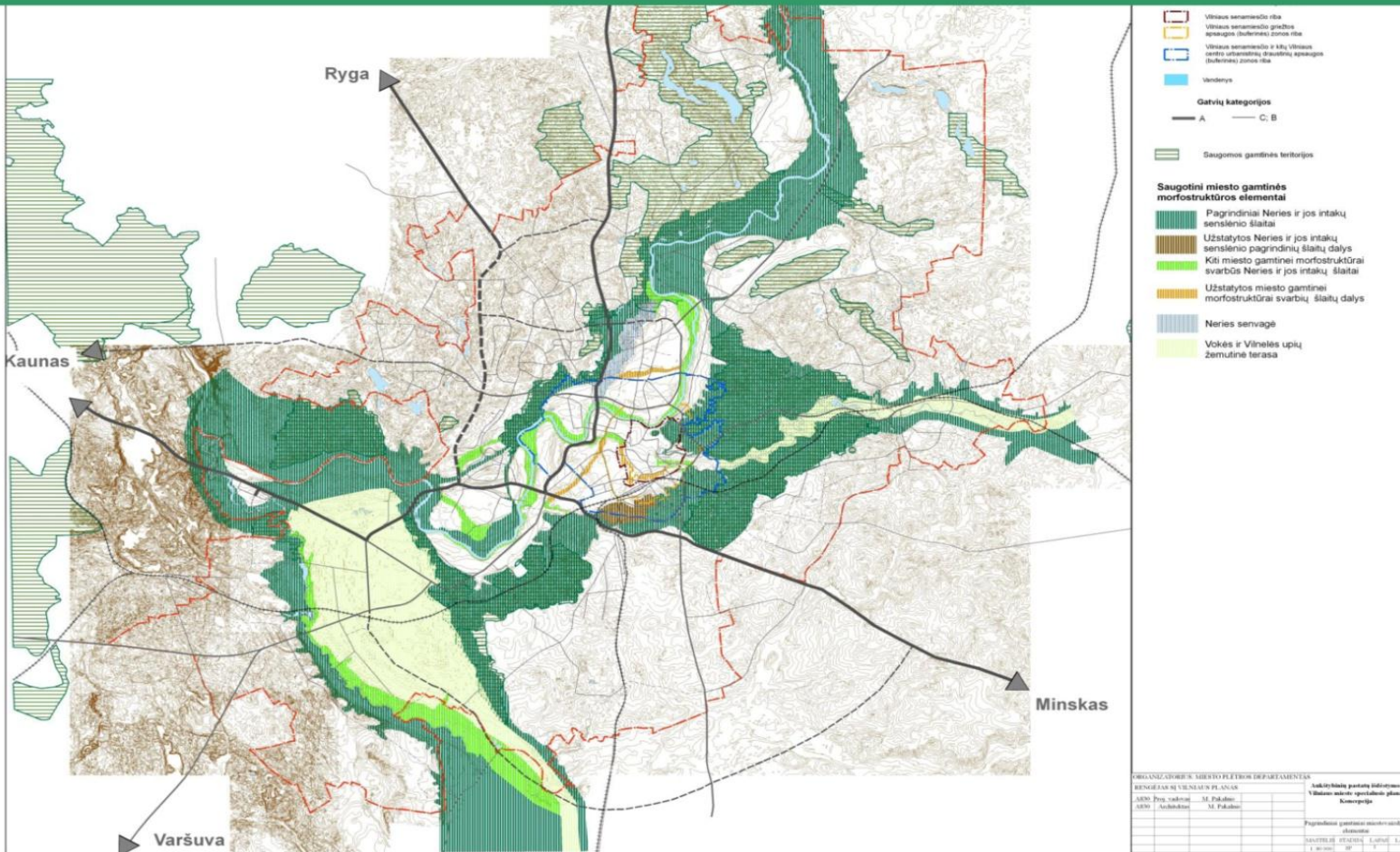
# Special planning of World Heritage Site – Vilnius Historic Centre (4)

## Preservation of heritage: the buffer zones of old town



## Special planning of World Heritage Site – Vilnius Historic Centre (5)

## The natural elements of city structure





# Territory planning and public participation in Lithuania

## LAW ON PROTECTED AREAS OF THE REPUBLIC OF LITHUANIA

### CHAPTER VII

#### ESTABLISHMENT, ACCOUNTING, PROTECTION AND MANAGEMENT OF PROTECTED AREAS

„ 10. Prior to establishment of strict reserves, state parks, state reserves and areas of biosphere monitoring, account **shall be taken of public needs**, economic assessment shall be performed, expenditure on compensation of the activities required to be terminated (where necessary), repurchase of land, restoration of damaged territories as well as sources of financing of the establishment and maintenance of a protected area shall be provided for. Where legal acts or typical regulations cannot ensure protection, a plan of boundaries of a strict reserve, state park, reserve and area of biosphere monitoring to be established may refer to additional regulations specifying permitted or restricted (prohibited) types of activities, types, height and materials of structures, density, construction lines or locations.“

# Special planning of protected areas and cultural heritage sites



**The Trakai Historical National Park. It is the only historical park in Lithuania**



# The unique landscape of Trakai Historical National Park





# Special planning of cultural heritage sites



**The Tiskevicius Manor House with its famous Amber Museum and park in Palanga**

# Landscape news in Lithuania (2012)

## Adopted

- ✓ Special plan for Coastal strip management
- ✓ Curonian Spit national park (UNESCO) management plan

## Start of preparation

Preparation for the National landscape plan M1: 400 000

Revision of the **Regulations of the Special landscape planning** (stressed on scope of landscape quality objectives and role of public)

Landscape Guidelines for roads and railways

Methodical guidelines for urban parks planning – local landscape planning regulations

Test project on Local eco networks creation (*Emys orbicularis*, *Hyla arborea*, *Bombina bombina*, *Triturus cristatus*, etc)

# Landscape news in Lithuania (2012)

## **National landscape award (NLA) session**

29 different scale projects,

New advanced public participation practices in the processes of landscape assessment and definition its quality objectives occurring

## **Conference of the 10-anniversary of ELC in Lithuania**

**19th of October, 2012**

## **Exhibition of the local and regional Actions relating ELC**

**– pretenders of NLA**

## **New books**

“European landscape convention” – Lithuanian linguistic versions of ELC related texts and National landscape policy.

On the preparation – 2 volumes of “Diversity of Lithuanian landscape” - periodical publications focused on the recent landscape architecture works and the teaching landscape at school.



# Thank you!



**Ms Irma Grigaitienė**  
**Head of the Division of Protected Areas and Heritage Protection**  
**Ministry of Culture, Lithuania**  
**e-mail: [i.grigaitiene@lrkm.lt](mailto:i.grigaitiene@lrkm.lt)**